

The Bluegrass Oakwood Facility-Wide PBS survey outcome data 2010

We have to know where are to get close to where we want to go

James Adkins, MA
Positive Behavior Support Coordinator

“Essentials” data

Based on survey results from people who had at least a ½ day overview of the PBS principles

Cultural level Questions

Please indicate which numbered response is closest to your answer	Strongly agree	Agree	don't know	Disagree	strongly disagree
	5	4	3	2	1
1. Effective and relevant trainings for staff are developed, modified, and conducted regularly based upon organizational data.	55%	45%	0%	0%	0%
2. Patterns of staff problem behavior are part of discussion and active decision making on how to improve regularly in the program I work.	45%	27%	18%	9%	0%
3. Training for residents are developed, modified, and conducted regularly based	55%	36%	0%	0%	9%
4. Patterns of resident problem behavior are reported to support teams on a monthly basis for discussion and active decision making.	27%	55%	18%	0%	0%
5. ALL staff are involved directly and/or indirectly in and taught how to reinforce expected behavior and not reinforce problem behavior	27%	55%	18%	0%	0%

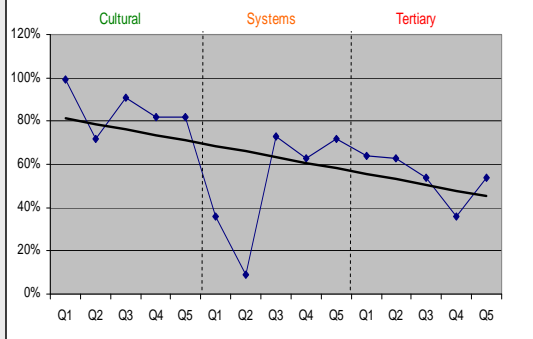
Systems/program level questions

Please indicate which numbered response is closest to your answer	Strongly agree 5	Agree 4	don't know 3	Disagree 2	strongly disagree 1
1. Expected resident behaviors are acknowledged regularly and positively reinforced effectively (at least 4 positives to 1 negative on avg.)	18%	18%	64%	0%	0%
2. Residents experience high rates of success – on average about 75% will meet goals needed in about 6 months for discharge	9%	0%	73%	18%	0%
3. Problem behaviors are defined clearly for both staff and residents and positive behaviors are taught directly	18%	55%	27%	0%	0%
4. Program alternatives exist to allow program instruction to continue when problem behavior occurs and continue active treatment	18%	45%	36%	0%	0%
5. The teaching methods and what we teach are matched to individual ability (functional communication etc)	27%	45%	27%	0%	0%

Tertiary level questions

Please indicate which numbered response is closest to your answer	Strongly agree 5	Agree 4	don't know 3	Disagree 2	strongly disagree 1
1. Significant family and/or community members are involved (outside the agency) for resident on a routine basis	36%	18%	45%	0%	0%
2. Assessment is conducted regularly and effectively to identify and support residents with chronic problem behavior	27%	36%	36%	0%	0%
3. Open communication via email, drop boxes, telephone calls to clinical staff from direct support staff are supported and encouraged	36%	18%	36%	9%	0%
4. The team responds promptly (within 2 working days) for residents who present chronic behavior problems.	18%	18%	55%	9%	0%
5. I receive effective training for supporting residents with chronic behavior problems	9%	45%	27%	9%	9%
Total Respondents	11				

Essentials at least "agree"



“Core” data

Based on survey results from people who had at least a 2 day training of PBS principles and practices

Cultural level Questions

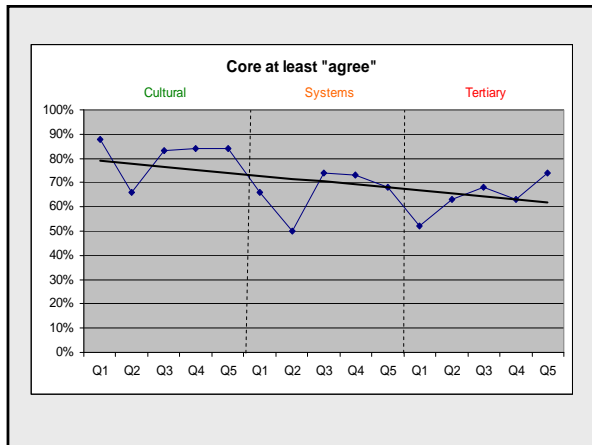
Core					
	Strongly agree	Agree	don't know	Disagree	strongly disagree
Please indicate which numbered response is closest to your answer	5	4	3	2	1
1. Effective and relevant trainings for staff are developed, modified, and conducted regularly based upon organizational data.	28%	60%	6%	6%	0%
2. Patterns of staff problem behavior are part of discussion and active decision making on how to improve regularly in the program I work.	19%	47%	18%	13%	5%
3. Training for residents are developed, modified, and conducted regularly based	21%	63%	5%	8%	3%
4. Patterns of resident problem behavior are reported to support teams on a monthly basis for discussion and active decision making.	28%	54%	12%	5%	1%
5. ALL staff are involved directly and/or indirectly in and taught how to reinforce expected behavior and not reinforce problem behavior	28%	54%	12%	5%	1%

Systems/program level questions

	Strongly agree	Agree	don't know	Disagree	strongly disagree
Please indicate which numbered response is closest to your answer	5	4	3	2	1
1. Expected resident behaviors are acknowledged regularly and positively reinforced effectively (at least 4 positives to 1 negative on avg.)	19%	47%	21%	7%	5%
2. Residents experience high rates of success—on average about 75% will meet goals needed in about 6 months for discharge	13%	37%	29%	16%	5%
3. Problem behaviors are defined clearly for both staff and residents and positive behaviors are taught directly	21%	54%	12%	10%	3%
4. Program alternatives exist to allow program instruction to continue when problem behavior occurs and continue active treatment	17%	56%	13%	11%	3%
5. The teaching methods and what we teach are matched to individual ability (functional communication etc)	18%	50%	12%	12%	7%

Tertiary level questions

Please indicate which numbered response is closest to your answer	Strongly agree	Agree	don't know	Disagree	strongly disagree
	5	4	3	2	1
1. Significant family and/or community members are involved (outside the agency) for resident on a routine basis	15%	37%	30%	13%	5%
2. Assessment is conducted regularly and effectively to identify and support residents with chronic problem behavior	22%	45%	21%	7%	4%
3. Open communication via email, drop boxes, telephone calls to clinical staff from direct support staff are supported and encouraged	23%	45%	20%	9%	3%
4. The team responds promptly (within 2 working days) for residents who present chronic behavior problems.	19%	44%	25%	7%	5%
5. I receive effective training for supporting residents with chronic behavior problems	23%	51%	16%	9%	2%
Total Respondents	187				



“Enhanced” data

Based on survey results from people who had at least a 3 day training of PBS principles, practices and teaching methodologies for persons with more unique learning needs

